



Model Number

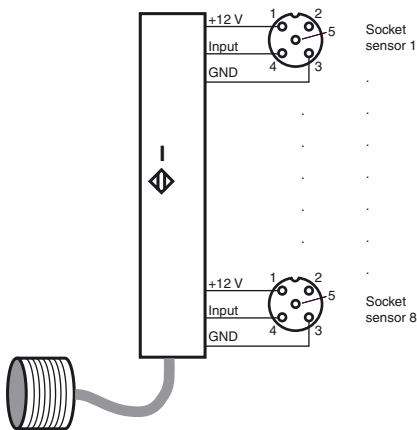
NDS-F146-8E2-V1

Features

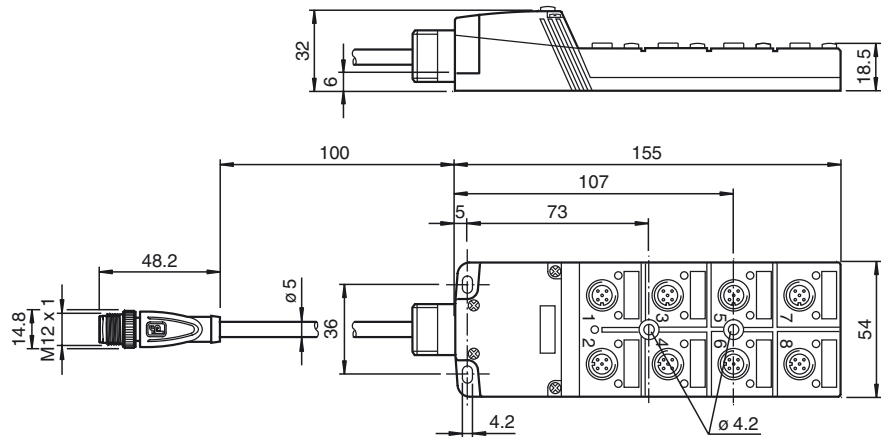
- 8 channels
- 8 sensor inputs
- Fast, flexible installation/separation

Electrical Connection

Connection:



Dimensions



Technical Data

Nominal ratings

Number of signal channels	8
Signal transfer direction	from secondary side to primary side
Sensor supply voltage	12 V ± 10 % , overload and short-circuit resistant
Ripple	≤ 5 %
Transfer power	max. 2.5 W (1.5 W at 5 mm)
Load step	≤ 100 mA

Input

Number	8
Input type	Input for sensor signals
Connectable sensor types	DC, 3-wire , PNP (switched high)
Input current	≤ 1 mA
Internal resistor	≥ 15 kΩ

Ambient conditions

Ambient temperature	0 ... 50 °C (32 ... 122 °F)
Storage temperature	-25 ... 85 °C (-13 ... 185 °F)

Mechanical specifications

Protection degree	IP65
Material	
Housing	PA 66-FR
Installation	screw mounting
Mass	140 g



Release date: 2011-02-08 09:54 Issue date: 2011-02-08 200663_ENG.xml

Subject to modifications without notice

Pepperl+Fuchs Group
www.pepperl-fuchs.com

USA: +1 330 486 0001
fa-info@us.pepperl-fuchs.com

Germany: +49 621 776-4411
fa-info@pepperl-fuchs.com

Copyright Pepperl+Fuchs

Singapore: +65 6779 9091
fa-info@sg.pepperl-fuchs.com